



PiCUS Price List

Precise Measuring Technology for Tree Examinations
and Defect Development Analyzes



Table of Contents

Innovative wood testing systems for trees and timber structures

PiCUS Product Range

Measurement Technology for Tree
Examinations

PiCUS Sonic Tomograph 3	4-5
-------------------------	-----

PiCUS Geometry Measuring System Calliper 3	6
--	---

Accessories and Spare Parts	7-8
-----------------------------	-----

PiCUS TreeTronic 3	9-10
--------------------	------

PiCUS Geometry Measuring System Calliper 3	11
--	----

Accessories and Spare Parts	12
-----------------------------	----

PiCUS TreeQinetic	13-14
-------------------	-------

Accessories and Spare Parts	15-18
-----------------------------	-------

PiCUS TreeMotion	19-20
------------------	-------

Accessories and Spare Parts	21
-----------------------------	----

PiCUS Tension	22-23
---------------	-------

Accessories and Spare Parts	24-25
-----------------------------	-------

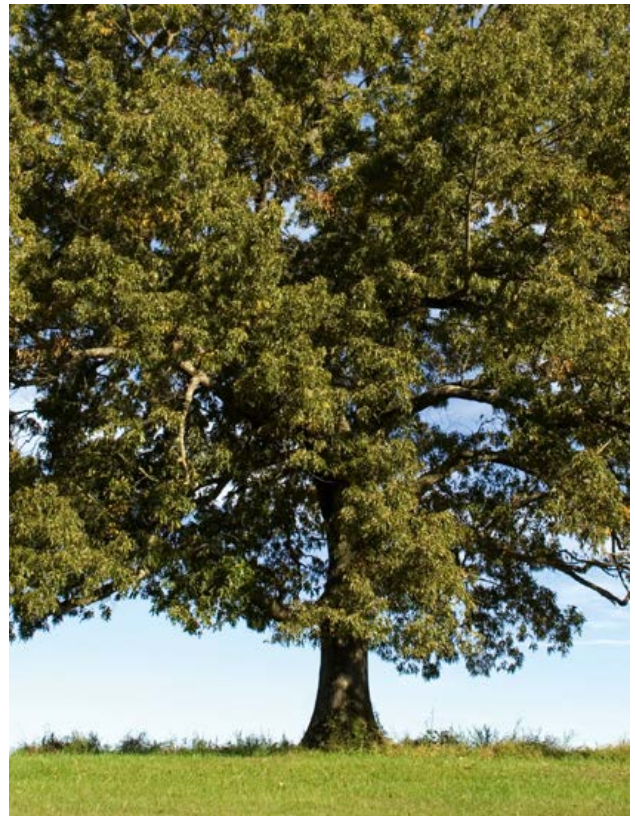
Shipping and Payment

IML Cloud	26
-----------	----

Disclaimer / Shipping and Payment	27-29
-----------------------------------	-------

PiCUS Sonic Tomograph 3

High-resolution sound measurement for the graphic representation of wood defects



PiCUS Sonic Tomograph 3

High-resolution sound measurement for the graphic representation of wood defects

PiCUS Sonic Tomograph 3

The PiCUS Sonic Tomograph is used for detailed road safety examinations on trees in order to assess the inner condition of trunks with hollows or fungi. Sonic tomographic measurements are particularly common in the area near the base of trees, additionally PiCUS Sonic Tomograms also provide valuable information on pruning wounds and branch forks when diagnosing trees.

A 2D image is calculated from the measured speeds and geometrical information on the measuring level.

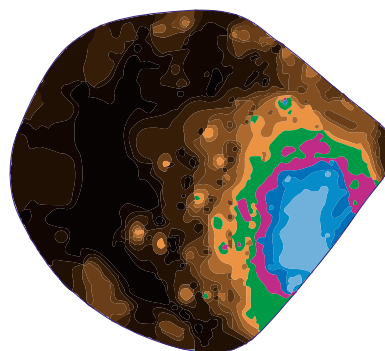
The graphic representation displays areas with different transit times in different colors. In this way, not only can a distinction be made between intact and defective, but gradations in the degree of decomposition can also be recognized.

Standard Scope of Delivery:

- PST3 PELI case including compartment for Calliper
- Control unit
- Sensor cable harness with 6 sensors (left side 1-6)
- Sensor cable harness with 6 sensors (right side 7-12)
- Radiohammer with display for PST 3
- Hammer cable
- 4 x Belt clips
- USB cable
- 2 x Straps 4,5 m, 25 mm
- Power supply with various country adapters
- Measuring tape 10m
- Pinching pliers 160mm
- Soft-faced hammer 300 mm
- Nail / screw box
- Number plates 1 to 24
- USB stick with software and manual
- PiCUS bag
- Technical instruction and assistance with set-up in Rostock and Wiesloch or via webinar and webcast
- IMLTree Inspection Software Version Q80 including IML Cloud 3GB 10 licences in total for Q80, IOS, Android and Q74Expert, Cloud address cannot be changed, the Q74 is not cloud-enabled



Standard scope of delivery



Electric sonic tomogram of a linden tree with cavity and rot

PiCUS Sonic Tomograph 3
Standard with 12 sensors

Item No. 100101001

17.600,00 €

PiCUS Sonic Tomograph 3
With 6 Sensors

Item No. 100101002

12.500,00 €

Accessories and Spare Parts

PiCUS Sonic Tomograph 3

PiCUS Geometry Measurement System Calliper 3

Measuring device for exact measurement of the geometry in the selected measuring plane. Software compatible with PiCUS Sonic Tomograph, PiCUS TreeTronic, to IML Picus software and third-party systems

- Measuring range 1: 160mm - 1.800mm
- Measuring range 2: 160mm - 2.150mm with extension
- PiCUS Geometry Measuring System Caliper 3
- PiCUS Calliper 3
- Charging power supply PCA3 / PRHD
- PiCUS Calliper 3 single device
- Without accessories
- Can be integrated into Sonic Tomograph and Tree Tronic case



PiCUS Geometry Measurement System Calliper 3	Item No. 100301006	3.200,00 €
PiCUS Calliper 3	Item No. 100301005	3.050,00 €

PiCUS Calliper 3 Power Supply

Power Supply PCA3 / PRHD

PiCUS Calliper 3 Power Supply	Item No. 901100018	97,00 €
-------------------------------	--------------------	---------

Accessories and Spare Parts

PiCUS Sonic Tomograph 3

IMLTree Inspection Software Q80

- 3GB Transfercloud storage
- IOS and Android support
- 10 Licences in total for APP and Windows Software



IMLTree Inspektionssoftware Q80 including IML Cloud 3GB

Item No. 901400009

800,00 €

Sensor Cable

For PiCUS Sonic Tomograph 3



Sensor Cable (6 sensors right 7-12)

Item No. 100101003

5.350,00 €

Sensor Cable (6 sensors right 1-6)

Item No. 100101007

5.350,00 €

Number Plates



Number Plates 1-24

Item No. 900100001

57,00 €

Number Plates 25-48

Item No. 900100014

57,00 €

Charging Power Supply

For PiCUS Sonic Tomograph 3 / TreeTronic 3

Charging Power Supply

Item No. 901100015

97,00 €

USB-Cable

For PiCUS Sonic Tomograph 3 / TreeTronic 3

USB-Cable PST3/PTT3

Item No. 100105002

125,00 €

Accessories and Spare Parts

PiCUS Sonic Tomograph 3

PiCUS Bag

Bag for PiCUS Sonic Tomograph / TreeTronic



PiCUS Bag

Item No. 100106001

110,00 €

Radio Hammer with Display

For PiCUS Sonic Tomograph



Radio Hammer with Display PST3

Item No. 100101004

1.700,00 €

Hammer Cable

For the Radio Hammer



Hammer Cable PST3

Item No. 100105001

140,00 €

Tapping Pin with Tapping Pin Cable

For the Radio hammer



Tapping Pin with Tapping Pin Cable

Item No. 100103023

53,00 €

Tapping Pin Cable PST3 (pluggable)

Item No. 100103022

22,00 €

PRHD Radio Antenna

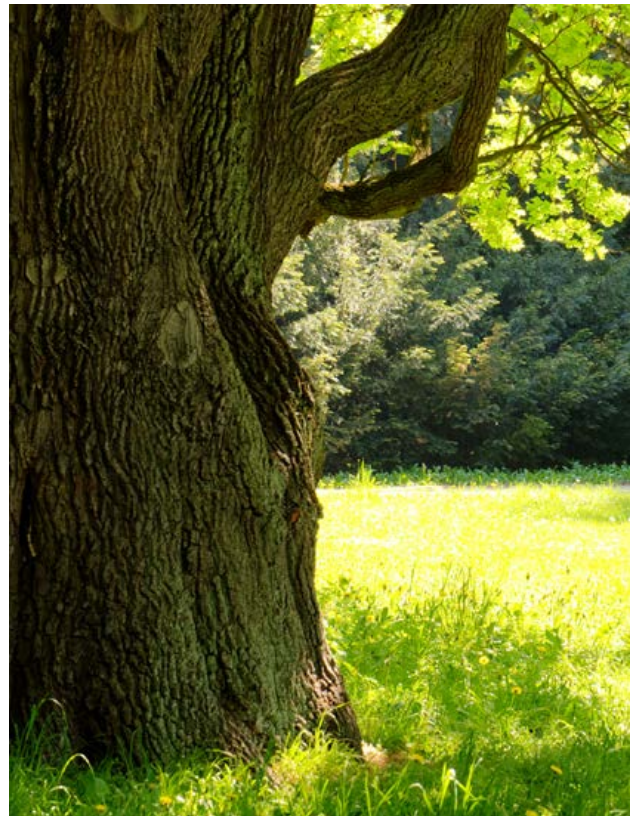
For the Radio hammer



Radio Antenna PRHD PST3

Item No. 100901035

65,00 €



PiCUS TreeTronic

Electric resistance tomograph for precise decay analysis

PiCUS TreeTronic 3

The electrical resistance tomograph PiCUS TreeTronic is used for detailed tree examinations as part of road safety inspections in combination with the PiCUS Sonic Tomograph in order to determine more precisely the remaining wall thickness as well as gather more detailed information about the type and extent of damage.

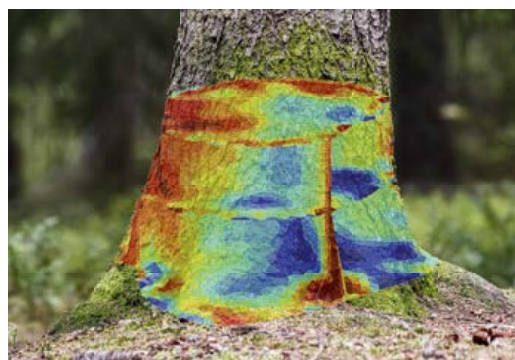
The measurement results of the electrical resistance tomograph (ERT) can be displayed in 2D and 3D graphics using the IMLTree Inspection Software Q80. This shows the extent of the defect in gradations. The 3D view also shows the vertical course of the damage. This data can be used to make a forecast of how the tree's resistance to breakage will develop over the next few years.

Standard Scope of Delivery:

- PTT3 PELI case including compartment for calliper
- Control unit
- Cable loom blue 1-12
- Cable loom red 13-24
- Power supply PST3/PTT3
- USB cable PST3/PTT3
- 2x Straps 4,5 m, 25 mm
- Measuring tape 10m
- Soft-faced hammer 300 mm
- Pliers 180 mm
- 4x Belt clips
- Nail / screw box
- Number plates 1 to 24
- USB stick with Software and manual
- PiCUS bag
- Test plate
- Technical instruction and assistance with set-up in Rostock and Wiesloch or via webinar and webcast
- IMLTree Inspection Software Version Q80 including IML Cloud 3GB 10 licences in total for Q80, IOS, Android and Q74Expert, Cloud address cannot be changed, the Q74 is not cloud-enabled



PiCUS TreeTronic scope of delivery



Measurement result in 3 measurement levels

PiCUS TreeTronic

Item No. 100201001

9.300,00 €

Accessories and Spare Parts

PiCUS TreeTronic 3

PiCUS Geometry Measurement System Calliper 3

Measuring device for exact measurement of the geometry in the selected measuring plane. Software compatible with PiCUS Sonic Tomograph, PiCUS TreeTronic, to IML Picus software and third-party systems

- Measuring range 1: 160mm - 1.800mm
- Measuring range 2: 160mm - 2.150mm with extension
- PiCUS Geometry Measuring System Caliper 3
- PiCUS Calliper 3
- Charging power supply PCA3 / PRHD
- PiCUS Calliper 3 single device
- Without accessories
- Can be integrated into Sonic Tomograph and Tree Tronic case



PiCUS Geometry Measurement System Caliper 3	Item No. 100301006	3.200,00 €
PiCUS Calliper 3	Item No. 100301005	3.050,00 €

PiCUS Calliper Power Supply

For PiCUS Calliper 3

PiCUS Calliper 3 Power Supply	Item No. 901100018	97,00 €
-------------------------------	--------------------	---------

Accessories and Spare Parts

PiCUS TreeTronic 3

MLTree Inspection Software Q80 inklusive IML Cloud 3GB

IMLTree Inspection Software Q80 inklusive IML Cloud 3GB	Item No. 90140009	800,00 €
---	-------------------	----------

Number Plates



Number Plates 1-24	Item No. 900100001	57,00 €
Number Plates 25-48	Item No. 900100014	57,00 €

PiCUS Bag

Bag for PiCUS Sonic Tomograph / TreeTronic



PiCUS Bag	Item No. 100106001	110,00 €
-----------	--------------------	----------

Measuring chain

Left: red 1-12

Right: blue 13-24



Measuring chain red 1-12 PTT3	Item No. 100207001	690,00 €
Measuring chain blue 13-24 PTT3	Item No. 100107002	690,00 €
PTT3 Extension set 2x 1,5m	Item No. 100201012	495,00 €

Charging Power Supply PST3/PTT3

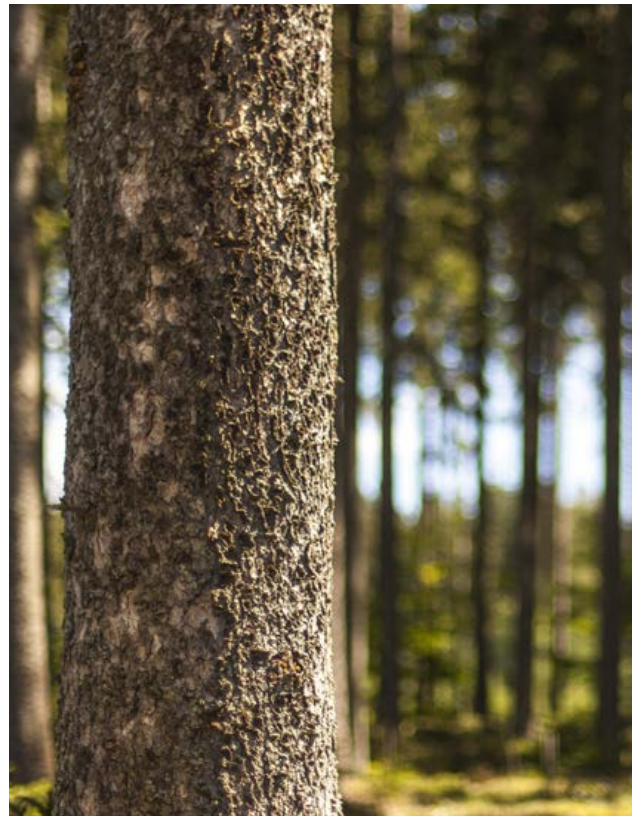
For PiCUS Sonic Tomograph 3 / TreeTronic 3

Power supply	Item No. 901100015	97,00 €
--------------	--------------------	---------

USB-Cable

For PiCUS Sonic Tomograph 3 / TreeTronic 3

USB-Cable	Item No. 100105002	125,00 €
-----------	--------------------	----------



PiCUS TreeQinetic

Combined measurement technology for tensile tests on trees

PiCUS TreeQinetic

The tensile test with the PiCUS TreeQinetic provides you with measurement data you need to determine the root condition and the resistance to trunk breakage.

During the tensile test, the tree is exposed to a defined equivalent wind load. The PiCUS TreeQinetic records three measured variables at the same time:

- Applied force
- Stretching or compression of the wood fibers
- Root plate inclination

To do this, the tree is pulled with a rope attached to the crown and with the help of a winch. The load generated in this way and the reaction of the tree are measured with the Forcemeter, Inclinator and Elastometer of the PiCUS TreeQinetic.

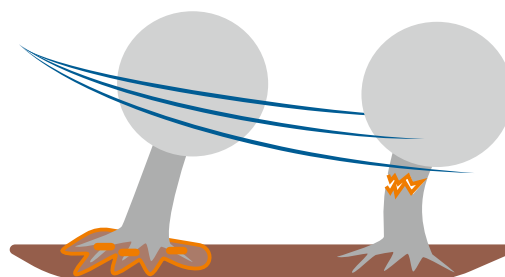
In this way, it is possible to determine how a tree behaves under load with a single measurement setup. This allows an assessment of the stability and break resistance in the case of expected wind events.

Standard Scope of Delivery:

- Transport case
- Communication and charging unit
- Forcemeter V2
- Inclinator 0,002°
- 2x PTQ Magnetholder screwable
- Elastometer
- 10x Elastometer needles
- Elastometer nail gauge
- Power Supply 24V
- Power cord
- 3x Charging cables 0,45 m
- USB Data cable
- 2x Data cables 5 m
- Data cable Forcemeter 30 m
- USB stick with software for PC and manual
- Overload indicator
- 2x shackles (6700 kg, with bolt)
- Rivet pliers (for removing the elastometer needles)
- Bluetooth 5.1 USB radio stick
- PTQ measurement software, APPS for Android and IOS with a total of 10 licences
- Analysis software is not included and must be requested separately



PiCUS TreeQinetic scope of delivery



Determination of the root condition and the resistance to trunk breakage

PiCUS TreeQinetic

Item No. 100401001

12.600,00 €

Accessories and Spare Parts

PiCUS TreeQinetic

Wind Measurement System PTQ

- Can be combined with PTQ
- No cloud connection

Wind Measurement System PTQ

Item No. 100451005

1.800,00 €

Wind Measurement System Cloud

- Can be combined with TMS 3 or as a stand-alone system
- Data transfer directly to IML Cloud
- 200 days offline measurement due to internal memory

Wind Measurement System Cloud

Item No. 100501010

2.160,00 €

10 m mast for the Wind Measurement Unit

- Aluminum telescopic mast 10m
- Tripod
- Tens peg screws
- Rope
- other accessories



10 m mast for the Wind Measurement Unit

Item No. 100451002

1.150,00 €

Accessories and Spare Parts

PiCUS TreeQinetic

PTQIM Inclinometer Set 0,002°

- Inclinometer 0,002°
- PTQ magnetic holder screwable
- Available in five different colours
- Max. 10 devices on one system



PTQIM Inclinometer Set 0,002°

Item No. 100431005

2.600,00 €

PTQEM Elastometer Set

- Elastometer
- 10x Needles for Elastometer
- Available in five different colours
- Max. 10 devices on one system



PTQEM Elastometer Set

Item No. 100441003

2.700,00 €

PTQOI Overload Indicator Set

- Overload Indicator
- PTQ Magnetholder
- two screws 4,5x50 TX20



PTQOI Overload Indicator

Item No. 100461000

1.280,00 €

PTQ 8-way HUB

- 8 Channel charger
- simultaneous charging or data transfer via cable, possible for up to 8 sensors
- Optional: power supply unit, charging an data cable

PTQ Channel Charger

Item No. 100471001

905,00 €

PTQEM Needle for Elastometer



PTQEM Needle for Elastometer

Item No. 100443012

4,70 €

PTQEM Elastometer Nail gauge

PTQEM Needle for Elastometer

Item No. 100441002

106,00 €

Accessories and Spare Parts

PiCUS TreeQinetic

Reinforced Shackle for Forcemeter

Max. workingload: 6.700 kg
Grade 10



Reinforced Shackle for Forcemeter

Item No. 100401030

99,00 €

Winch with Accessories (16 kN)

- Winch 16 kN
- Steel cable (15 m)
 - Strap 4m 2t
 - Strap 5m 2t
 - Shackles
 - Extension rope
 - Protected attachment sling



Winch with Accessories (16 kN)

Item No. 100401003

1.750,00 €

Charging cable 0,45 m

For TreeQinetic

Charging cable 0,45

Item No. 100401009

70,00 €

Data cable 5 m

For TreeQinetic

Data cable 5 m

Item No. 100401010

87,00 €

PTQ Charging Power Supply

For TreeQinetic

PTQ Charging Power Supply

Item No. 901100014

89,00 €

Accessories and Spare Parts

PiCUS TreeQinetic

Data Cable Forcemeter 30 m

data cable for forcemeter

PTQ Data Cable screwable

Item No. 100401011

145,00 €

PTQ Magnetic Holder screwable

for Inclinator and Overload Indicator



PTQ Magnetic Holder screwable

Item No. 100431006

34,00 €

PTQ Magnetic Holder thorn

- for Inclinator and Overload Indicator
- is struck in via hammer



PTQ Magnetic Holder thorn

Item No. 100431002

67,00 €

Inclinometerthorn



Inclinometerthorn

Item No. 100433014

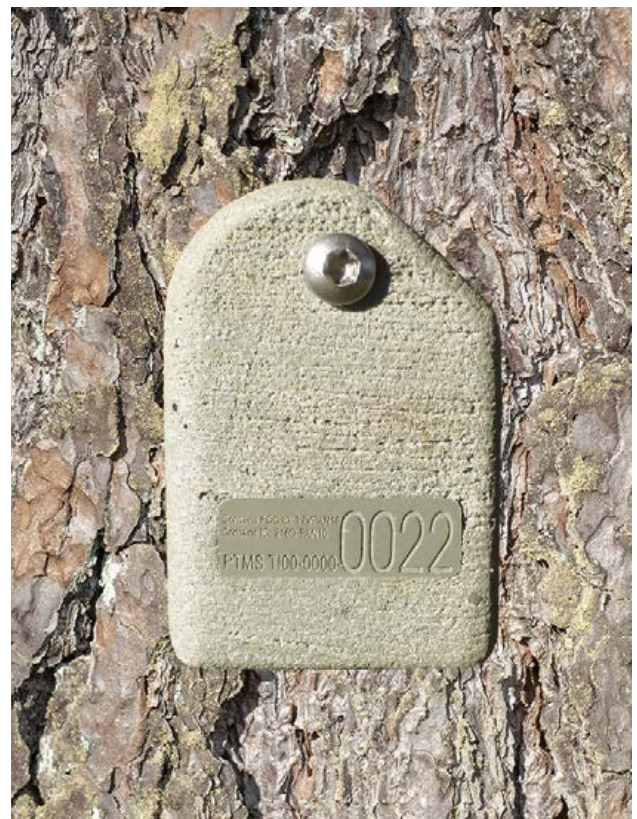
18,00 €

PTQ TreeQinetic Impact cap

PTQ TreeQinetic Impact cap

Item No. 100431004

17,00 €



PiCUS TreeMotion

Wind response measurement of trees under real conditions

PiCUS TreeMotion

The wind reaction measurement with the TreeMotion Sensor records the swinging movement of trees under real conditions and allows conclusions to be drawn about the anchoring of the roots in the ground. In addition to the properties of the tree, all environmental factors influencing the wind are taken into account. In this way, the stability can be assessed at the actual wind exposure.

A basic sensor measures the inclination of the root plate directly at the base of the trunk. A control sensor measures the inclination at a height of 2 to 3 meters so the real wind reaction of the tree can be differentiated from sources of interference. The PiCUS TreeMotion sensor can record the measurement independently for hours, days or weeks. The data evaluation takes place comfortably in the office.

Scope of Delivery (Starter Set):

- system case with integrated 10-way induction charger
- 10x Sensors
- Power cord
- Software

Scope of delivery (Mini-Kit):

- Mini-Transport case
- 2x Sensors
- inductive single charger
- Software



PiCUS TreeMotion Sensor 3 Starter set scope of delivery



PiCUS TreeMotion Sensor 3 Mini-Kit scope of delivery

PiCUS TreeMotion Sensor 3 Starter Set	Item No. 100501011	4.950,00 €
PiCUS TreeMotion Sensor 3 Mini-Kit	Item No. 100501014	1050,00 €

Accessories and Spare Parts

PiCUS TreeMotion

Wind Measurement System PTQ

- Can be combined with PTQ
- No Cloud connection

Wind Measurement System PTQ

Item No. 100451005

1.800,00 €

Wind Measurement System Cloud

- Can be combined with TMS 3 or as a stand-alone system
- Data transfer to IML Cloud

Wind Measurement System with Cloud

Item No. 100501010

2.160,00 €

10 m Mast for Wind Measuring Unit

- Aluminum telescopic mast 10 m
- Tripod
- Tent peg screws
- Rope
- Other accessories



10 m Mast for Wind Measuring Unit

Item No. 100451002

1.150,00 €

PTMS 3 Sensor

For PiCUS TreeMotion

PTMS 3 Sensor



365,00 €

PTMS 3 Magnetic pen

One piece

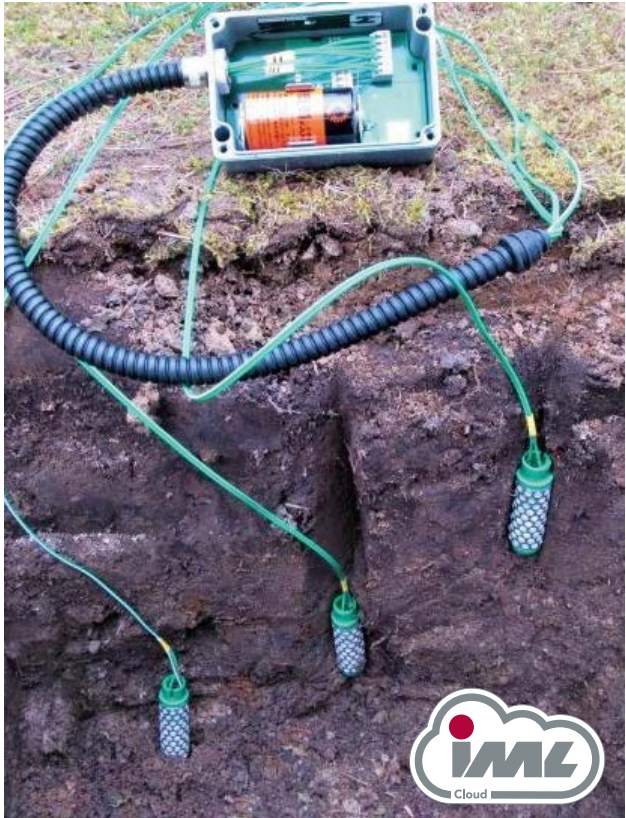
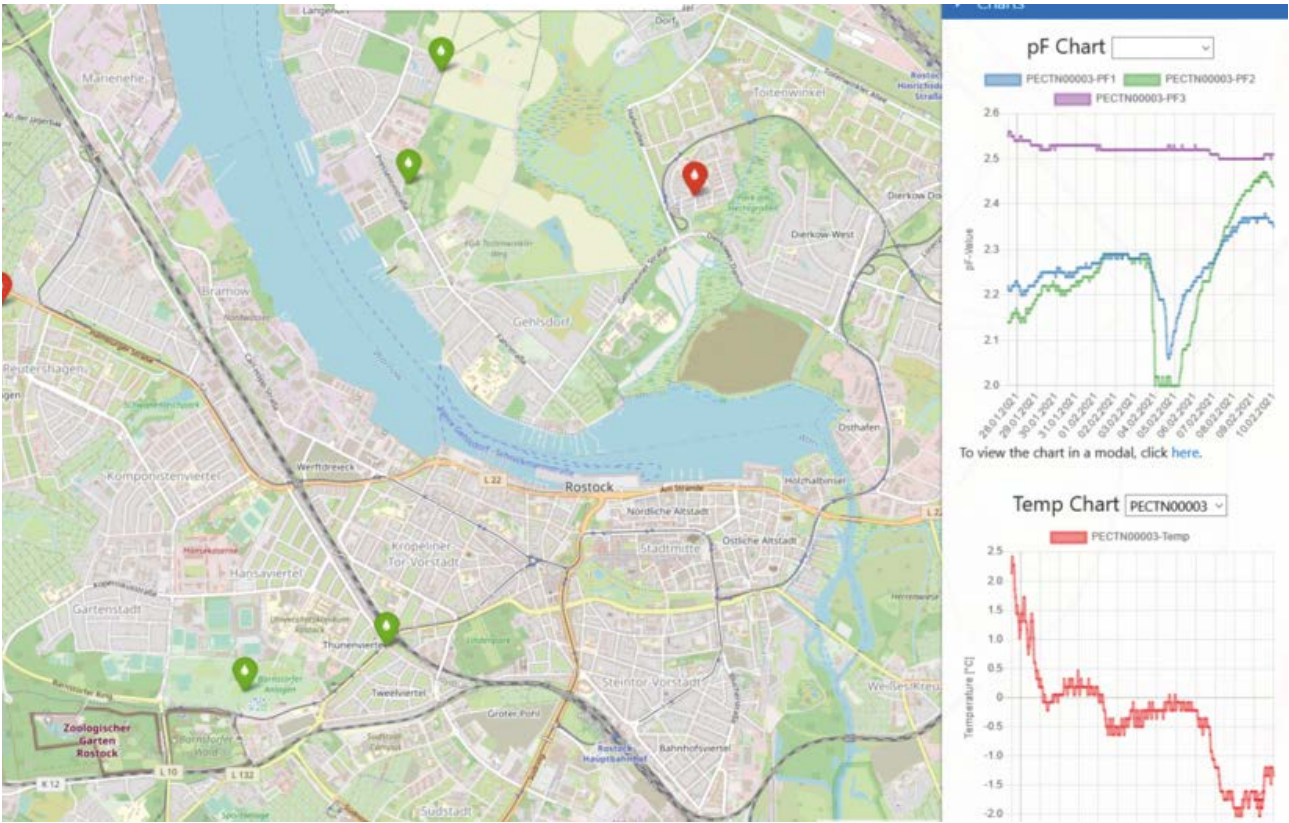
PTMS 3 Magnetic pen

Item No. 100501013

30,00 €

PiCUS Tension

Continuous soil moisture measurement



PiCUS Tension

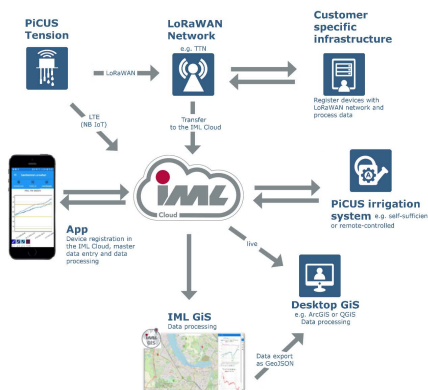
Continuous soil moisture measurement

PiCUS Tension

The PiCUS Tension System can be installed underground or above ground. Be installed independently at the location of your trees. It has seven connections to which different types of sensor different types of sensors can be connected, such as Suction voltage sensors to measure the soil water tension measure the soil water tension and thus draw conclusions about the water availability of your plants.

The sensors can be flexibly positioned, both more in the area or, for example in the root ball at different heights, for example. Combining the suction sensors with soil moisture sensors watering recommendations are generated, which enables resource-saving irrigation, which minimises the risk of over- or under-watering. minimises the risk of over- or under-watering.

- Central electronics
- IML Cloud
- IML Cloud Devices APP
- Web-GIS



PiCUS Tension in operation

PiCUS Tension LoRaWAN Mix7

- Without cloud connection and app support
- Visualisation in 'IML-WebGIS' on request

PiCUS Tension LoRaWAN Mix7

Item No. 100701005

375,00€

PiCUS Tension LTE Mix7

- Including cloud connection, 500MB, APP and WebGIS access

PiCUS Tension LTE Mix7

Item No. 100701004

540,00€

Accessories and spare parts

PiCUS Tension

Sensor

Maximum 7 Sensors on one device

Sensors for the intake voltage Watermark 1,5m	Item No. 100704001	57,00€
Sensors for the intake voltage Watermark 3,0m	Item No. 100704005	58,00€
Sensors for the intake voltage Watermark 4,5m	Item No. 100704008	59,00€
Sensors for the intake voltage Watermark 10m	Item No. 100704004	60,00€

Cable protection

Option for mounting above the ground.
Provides protection during mowing and animal feed.

Cable protection	Item No. 100703007	15,00€
------------------	--------------------	--------

Soil moisture sensor 3.2m (rH in % and °C)

Other sensors, e.g. for salts, on request

Soil moisture sensor 3.2m (rH in % and °C)	Item No. 100704003	95,00€
--	--------------------	--------

Installation Shaft for Tension DN110

Installation Shaft for Tension DN100	Item No. 100703013	17,00 €
--------------------------------------	--------------------	---------

Earth auger 30mm - 1m

Earth auger 30mm - 1m	Item No. 100703012	61,00 €
-----------------------	--------------------	---------

PiCUS Tension Watermark Installation Aid

PiCUS Tension Watermark Installation Aid	Item No. 100703010	103,00 €
--	--------------------	----------

Tip Probing Rod

Can be used as a probing rod in conjunction with an installation aid	Item No. 100703011	16,50 €
--	--------------------	---------

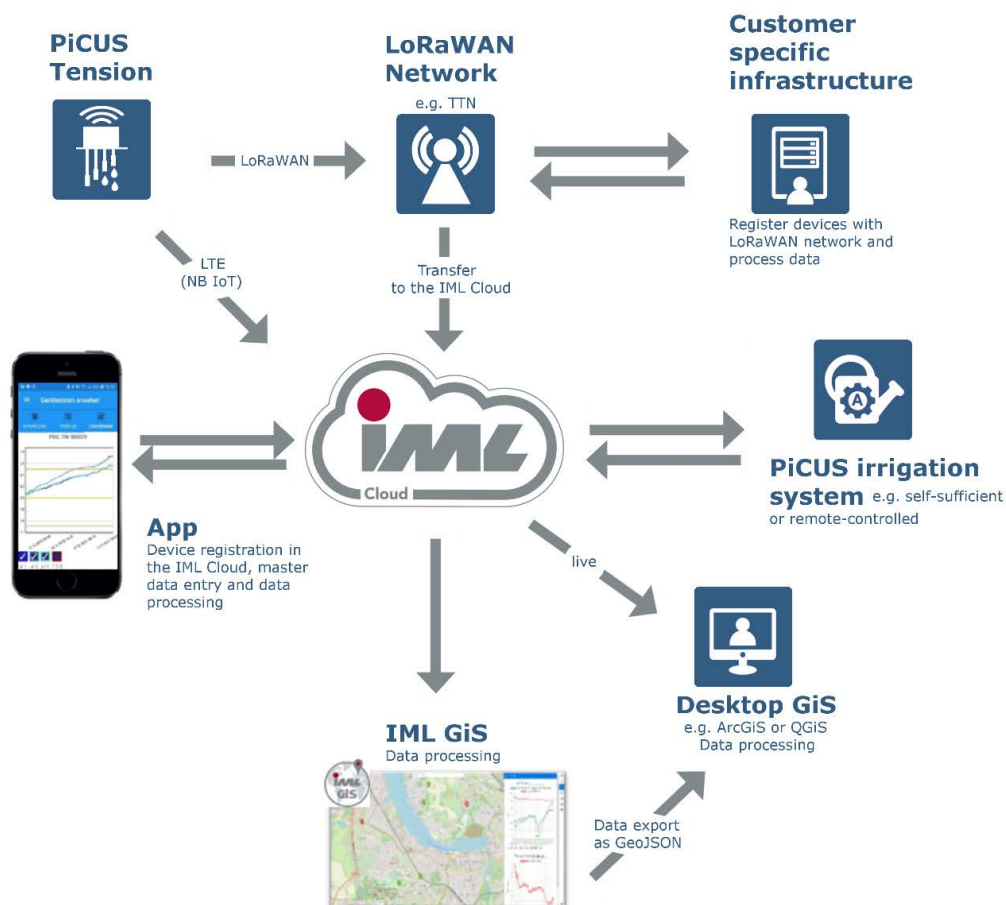
PiCUS Irrigation and Drainage Technology

Continuous soil moisture measurement

Installation of automatic irrigation or drainage.

The PiCUS irrigation system uses the PiCUS Tension as its basis. The data obtained from the sensors is used to set threshold values in the system. In the system. If these threshold values are reached, e.g. slight drought stress, for example, the system is activated and controls one or more relays, which in turn a solenoid valve or a pump. There are numerous application applications, such as self-sufficient, centrally and decentrally mounted systems.

The control unit, including data volume and cloud, costs €1400.00 for a single-line version. version 1400,00€. In addition, there is the pump, sensors, pipework and installation, which must be calculated as required.



IML Cloud

IML Cloud

IML Cloud is an online data storage that is provided by IML Electronic.

Each customer who possesses at least one cloud compatible instrument from IML Electronic is getting an account.

The cloud consists of two main components:

- Database
- File storage

Most of the devices delivered by IML Electronic are already capable of uploading files to the online data storage directly on site or will be able to do so in the future.

On one hand the new series of IoT devices only becomes possible because they depend on such kind of data upload. On the other hand, customers are provided with the opportunity to use the devices more efficiently and more conveniently.

A typical application:

A field team is conducting measurements using IML Electronic instruments. All measuring results are directly uploaded to the cloud. In that way the data can immediately be assessed in the office without delay.

Furthermore, the cloud also offers not just data storage but also functions to filter and compare data and to run automated analyses.

Depending on the device, access to the cloud is via the corresponding app, the associated PC program and / or our new Web-GIS:



Disclaimer

All information contained in this price list has been prepared with the utmost care. However, errors cannot be excluded. IML-Instrumenta Mechanik Labor Electronic GmbH assumes neither legal responsibility nor any liability for the consequences of such errors or mistakes. The information contained herein may be modified without notice. No liability is accepted for printing or typographical errors. This price list is valid until the publication of a new price list, subject to price corrections due to any technical improvements. This price list supersedes all previously valid price lists. Any kind of reproduction or processing by means of electronic systems, or distribution of the present or any part of it without prior written approval of IML-Instrumenta Mechanik Labor Electronic GmbH is strictly prohibited. Product information in this price list is limited to a few fundamental properties and practical applications. Detailed information is available in our brochures or on our website: www.iml-electronic.com. All prices quoted are exclusive of VAT (within Germany), freight, packaging and insurance costs. Unless otherwise stated, all prices are in euro per unit. All prices are subject to change. We deliver in accordance with our general terms and conditions. Changes with regard to better function, performance, durability and technical improvements are reserved. Update and repair prices are not included in this price list. The following products are similar to those in the illustrations.

Sources

Design: Valentino Knopf - beready - www.beready.online

Product photographs: Valentino Knopf

stock.adobe.com:

© beready JohnatAPW #101642460	Page 4,
© beready soupstock #133440393	Page 22
© beready Andrei #142998739	Page 16
© beready Kodec #175658948	Page 24
© beready Cheryl Davis #17987334	Page 4
© beready Lukas Bast #217917023	Page 16
© beready valeryegorov #282499277	Page 22
© beready AA+W #303841680	Page 24
© beready Piotr #305312285	Page 24
© beready satori #42887585	Page 10
© beready romensky #91597156	Page 10

Terms and Conditions of Delivery and Payment

A. General Terms and Conditions (as of January 2022)

§ 1 Scope

(1) These General Terms and Conditions (hereinafter «GTC») apply to all orders placed by a consumer over the age of 18 or an entrepreneur (hereinafter both referred to as «customer») in the online shop of the «seller» (see § 2) regarding the goods and/or services offered there. They also apply to all contracts concluded on the basis of an enquiry submitted by a customer via the enquiry form or by email or using other telecommunications technology for precision parts.

(2) A consumer is any buyer who concludes the contract for a purpose which is predominantly neither attributable to his commercial nor his independent professional activity (§ 13 BGB - Civil Code).

(3) An entrepreneur is any buyer who concludes the contract as a natural or legal person or as a partnership with legal capacity, for a purpose that is attributable to the exercise of his commercial or self-employed professional activity (§ 14 BGB).

(4) The inclusion of the customer's own conditions (in particular, conditions of purchase) is expressly contradicted, unless otherwise agreed upon in writing.

(5) The deliveries and services offered by the seller are provided exclusively on the basis of these GTC. The GTC, therefore, apply to entrepreneurs within the meaning of § 1 para. 1 also for all future business relations, even if they have not been expressly agreed upon again.

(6) The currently valid GTC can be called up and printed out at any time on the website of the seller.

§ 2 Conclusion of the Contract

(1) The contract for all goods and/or services advertised in the online shop comes into effect with:

IML Instrumenta Mechanik Labor Electronic GmbH,
Erich-Schlesinger-Straße 49D, 18059 Rostock,
Tel.: +49 381496814-40, E-Mail: contact@iml-electronic.de,
Managing Directors: Fabian Hunger, Sebastian Hunger
Register court: District Court Mannheim, Registration
number: HRB 15527, Sales tax identification number according to
§ 27 a Value Added Tax Act: DE346959863

(2) The essential characteristics of the goods or services are those found in the respective product description provided by the seller.

(3) All offers in the online shop of the seller represent only a non-binding invitation to the customer to submit a corresponding purchase offer to the seller and not an offer of the seller within the meaning of § 145 BGB.

(4) Customers can submit the offer by using the online order form, which is in the seller's online shop. In this case, after entering the personal data and clicking on «Send order» in the final step of the ordering process, the customer places a binding order of the products in his/her shopping cart. The submission of the offer by the customer is only possible after the customer has received the General Terms and Conditions for his information and has included them in his offer by clicking on the «Accept General Terms and Conditions» button.

(5) The seller may accept the customer's offer within 2 (two) days by:

1. Sending an order confirmation to the customer in writing or in text form (email or fax).
2. Delivering the ordered goods to the customer.
3. Asking the customer to pay after placing the order.

With regard to the seller's period of acceptance, the receipt of the confirmation, the delivery of the ordered goods or the request for payment by the customer shall be decisive in each case. If several of the above-mentioned alternatives apply, the agreement becomes binding at the time the first alternative occurs. If the seller fails to accept the offer of the customer within the aforementioned period, this will be considered a rejection of the offer which means that the customer is no longer bound by the offer.

(6) Any confirmations of receipt or receipt sent automatically or manually after submission of the offer shall not be considered as acceptance of the offer by the seller, but are for information purposes only. A contract is therefore not concluded through them.

(7) If the last day of the period is a Saturday, a Sunday or a public holiday at the seller's registered office, then such day shall be replaced by the next working day.

(8) Since most of the correspondence and order processing takes place via email, the customer must ensure that the email address provided by him is correct and emails can be received.

(9) Enquiries about precision parts by the customer do not constitute offers. An offer only enters into force after the seller replies. The customer can accept this offer within a reasonable period of time. § 2 VII shall apply accordingly.

§ 3 Right of Revocation

(1) The customer bears the direct costs for the return of the goods(s) according to § 357 VI BGB (right of revocation).

(2) For other instructions on the right of withdrawal, which is part of these GTC, see the website of the seller.

§ 4 Price

(1) The prices quoted by the seller in the online shop are net prices. The sales tax is shown separately as soon as the product is placed in the shopping basket. Delivery and shipping costs are indicated separately in the respective product description and can be added by the customer to the price calculation of the shopping basket with the help of a computer.

(2) For deliveries to countries outside the European Union, additional costs may incur in individual cases, for which the seller is not responsible, and these are to be borne by the customer. This includes, for example, costs for transferring money through credit institutions (e.g. bank charges, exchange fees) or legal import duties or taxes (e.g. customs duties).

§ 5 Payment Terms and Default

(1) The customer has various payment options at his disposal. These are:

- Prepayment
- payment by credit card
- payment on invoice
- PayPal

(2) For orders that are not placed from the territory of the Federal Republic of Germany, there is only the option of prepayment or by credit card.

(3) The seller reserves the right only to accept certain payment methods for individual products. These are derived from the payment methods listed under «Select payment method».

(4) If prepayment has been agreed upon, payment is due immediately after conclusion of the contract. It must be made in full to the seller's account within 14 (fourteen) days at the latest.

(5) By choosing the payment method delivery against invoice, the purchase price will be due after the goods have been delivered and invoiced. In this case, the purchase price is to be paid either (a) within 8 (eight) days after receipt of the invoice with 2% discount or (b) within 20 (twenty) days after receipt of the invoice without deduction. This will be valid unless otherwise agreed upon. The seller reserves the right of a check of creditworthiness when selecting the payment method delivery on invoice and to refuse this payment method in case of a negative outcome after checking creditworthiness.

(6) If the customer is a consumer and is in default with a payment, he is obliged to pay additional statutory default interest in the amount of 5 percentage points above the base interest rate (§ 288 I BGB).

(7) If the customer is an entrepreneur and is in default with a payment, he is obliged to pay the additional statutory default interest of 9 percentage points above the base interest rate (§ 288 II BGB).

§ 6 Delivery and Shipping Conditions

(1) The delivery of goods is made to the delivery address provided by the customer. The order will be processed based on the address provided during the checkout process. Alternatively, if customers pay via PayPal, the delivery address set up with PayPal will be used.

(2) If the transport company sends the goods back to the seller because delivery to the customer was not possible, the customer shall bear the cost of the failed delivery. This does not apply:

- if the customer exercises his right of revocation upon delivery,
- if he is not responsible for the fact that delivery was impossible or
- if he was temporarily prevented from accepting the service offered, unless the seller had notified him of the service a reasonable time in advance.

(3) The risk of accidental loss and accidental deterioration of the sold goods shall pass to the customer upon handing over of the goods to the customer or to an authorised recipient.

(4) If the customer is an entrepreneur, the risk of accidental loss and accidental deterioration in case of sales shipment passes on to the respective forwarder with handing over the goods at the main office of the seller. Likewise, the risk of accidental loss and accidental deterioration shall pass to the customer acting as entrepreneur if dispatch is delayed at his request. The time of transfer of risk shall then be deemed to be the time from which the seller has reported the readiness for delivery.

(5) The seller reserves the right to withdraw from the contract in the case of incorrect or improper self-supply. This applies only when the seller is not responsible for the failed delivery and has completed a concrete cover transaction with the supplier with due diligence. The seller shall take all reasonable measures to procure the goods. In case of non-availability or only partial availability of the goods, the customer will be notified immediately, and any consideration shall be refunded straight away.

(6) For logistical reasons, deliveries may not be collected by the customer.

§ 7 Reservation of Ownership

- (1) The seller retains ownership to the delivered item until full payment of all claims arising from the purchase contract.
- (2) As long as ownership has not yet passed over, the customer is obliged to treat the object of purchase with care.
- (3) If the customer is an entrepreneur within the meaning of § 1 III of these GTC, he is entitled to resell the reserved goods during the normal course of business. The customer assigns the claims against the purchaser from the resale of the reserved goods to the purchaser up to the amount of the purchase price agreed upon with the seller (including value added tax). The customer remains entitled to collect the receivables even after this assignment. The seller will not collect the claim from the resale of the purchased item as long as the customer does not meet his payment obligations and, in particular, as long as no application for the opening of insolvency proceedings has been filed or payments have not been suspended.

§ 8 Defects Liability and Warranty

- (1) The statutory liability for defects (§§ 433 ff. BGB) shall apply in principle.
- (2) If the customer acts as an entrepreneur, the statutory provisions shall apply with the following modifications:
 - Only the seller's information and the manufacturer's descriptions are binding for the desired quality of the goods or service. Public promotions or advertising are expressly excluded.
 - The customer is obliged to examine the goods immediately after receipt with the necessary care for possible errors or defects and to notify the seller of obvious defects within 7 (seven) days after receiving the goods. Timely dispatch is sufficient for meeting the deadline. This also applies to subsequently discovered defects hidden after being discovered. The assertion of warranty claims is excluded in the case of infringement of duty to examine and to notify about defects (§ 377 HGB - Commercial Code).
 - If the goods are repaired, the seller does not have to bear the increased costs incurred by the goods being taken to a place other than the place of fulfillment, unless the goods are used as intended.
 - The warranty period is one year following receipt of the goods. This does not apply in cases of injury to life, body or health, in the event of intentional or grossly negligent breach of duty by the purchaser and in the event of fraudulent concealment of a defect.

§ 9 Liability

- (1) The seller is only liable for damages incurred if they are due to a breach of a substantial contractual obligation or to intentional or grossly negligent conduct on the part of the seller, his legal representatives or vicarious agents.
- (2) If an essential contractual obligation is slightly negligently violated, the liability of the seller is limited to the foreseeable damage typical for the contract. An essential contractual obligation is performed for commitments whose fulfillment makes the proper execution of the contract possible or on whose observance the customer has relied or was entitled to rely.
- (3) Any further liability for damages is excluded. Liability for culpable injury to life, body or health in accordance with the statutory provisions remains unaffected. This also applies to mandatory liability under the Product Liability Act.

§ 10 Concluding Provisions

- (1) The law of the Federal Republic of Germany applies to all legal relations between the buyer and the seller excluding all conflict-of-law provisions and international contracts (in particular, CISG). For consumers, this choice of law shall apply only insofar as the protection provided is revoked by mandatory provisions of the law of the state in which the consumer has his habitual residence.
- (2) If the customer is a merchant, a legal entity under public law or special public fund, the exclusive jurisdiction for any disputes arising under this contract shall be the registered office of the seller. The same applies to customers who have their registered office outside the territory of the Federal Republic of Germany if the contract or claims arising from the contract can be attributed to the professional or commercial activity of the customer. However, in the above cases, the seller is entitled to bring the matter before the court holding jurisdiction over the customer's registered office.
- (3) The language of the contract is German.
- (4) These GTC are also available in German. The English translation is for information purposes only and is not legally binding. In the event of discrepancies between the German and English versions, the German version shall apply.

B. Customer Information

§ 1 Information Regarding the Identity of the Seller

IML Instrumenta Mechanik Labor Electronic GmbH,
Erich-Schlesinger-Straße 49D, 18059 Rostock,
Tel.: +49 381496814-40, E-Mail: contact@iml-electronic.de,
Managing Directors: Fabian Hunger, Sebastian Hunger
Register court: District Court Mannheim, registration number: HRB 15527,
VAT ID number pursuant to § 27 a of the Value Added Tax Act:
DE346959863

§ 2 Information Regarding the Conclusion of the Contract

The conclusion of the contract is in accordance with § 2, conclusion of the general terms and conditions of the seller (see above).

§ 3 Information Regarding Payment and Delivery

Payment shall be made in accordance with § 5 Payment terms and default, delivery in accordance with § 6 Delivery and shipping conditions of the seller's General Terms and Conditions (see above).

§ 4 Information about the Technical Steps Leading to the Conclusion of the Contract

- (1) The customer has to go through the following technical steps for the submission of his offer via the online order form of the seller:
 1. Placing the product in the shopping cart
 2. Entering the billing and shipping addresses
 3. Selecting the desired shipping method
 4. Selecting the desired payment method
 5. Summary of the order data
 6. Sending the order
- (2) Acceptance by the seller shall be in accordance with §§ 2 VI ff. of the General Terms and Conditions of the Seller (see above).
- (3) When submitting an enquiry regarding precision parts via the online form or by email or other telecommunication technology, the contract is concluded in accordance with § 2 X of the General Terms and Conditions of the seller (see above).

§ 5 Information Regarding the Storage of the Contract

The contract text will be saved by the seller and sent to the customer after submitting his order, together with the given General Terms and Conditions and customer information in text form (e.g. as a letter, email). However, the contract text may no longer be accessible to customers on the seller's website once the order has been shipped.

§ 6 Information about the Technical Means to Identify and Correct the Input Errors

Before a binding order is submitted, customers can correct their entries using the standard keyboard and mouse functions. In addition, all entries will be displayed once again in a «Review order» screen so that the customer may correct them using standard keyboard and mouse functions before submission.

§ 7 Information on the Language Available for Concluding the Contract

Both the English and German languages are available for concluding the contract. Unless otherwise agreed upon, the language of the contract shall be the language in which the customer's offer is made.



With Passion and Precision

Manufactured by IML - Germany

IML Instrumenta Mechanik Labor Electronic GmbH

Erich-Schlesinger-Str. 49d

18059 Rostock | Germany

Phone: +49 38149 6814-40

E-Mail: contact@iml-electronic.de

Web: www.iml-electronic.com